

Dear Parents and Carers,

Planned reopening of School

I am writing to you following yesterday's confirmation by the Prime Minister that primary schools should re-open from next week, initially in reduced numbers to children from Reception, Year 1, Year 6, with the ambition of bringing in all primary year groups before the summer holidays. The children of key workers will also continue to be provided with a place at school. For vulnerable children who have an education health and care (EHC) plan, attendance is also expected by the government where it is determined, following risk assessment, that their needs can be as safely or more safely met in the educational environment.

You will also recall that I promised to send you more information as soon as I could about the changes to the school environment as a result of the children returning. I hope you have now had the chance to see the video about this that I sent to families on Wednesday. Over the past few weeks we have all been working very hard to carry out very detailed risk assessments and put in place all possible measures to ensure everyone's safe return to school. We have worked very closely with the other schools in our Trust, as well as speaking to other schools in the borough, to ensure we have best practice measures in place. In re-opening we have been guided by two absolutely critical key principles:

The obligation to ensure the safety, welfare and well-being of pupils, parents and staff; and making the best possible decisions based on the evidence we have and within the constraints and parameters, we face in our school.

Initially we will have our Year 1 pupils returning on the 2nd June and then on the 8th our Reception and Year 6 pupils. We have, using the risk assessments, factored in as many safety measures as possible to ensure that our pupils remain safe once they return to school. These measures include:

Safety Measures now in place

- 2M markers in all corridors
- Desks are 2M apart in class
- Frequent hand washing is encouraged
- Social Distancing Signs around the building to remind pupils to stay 2M apart

Children will arrive at school between 8am-8.30am and will enter through their designated gate. Reception through the Reception gate on Nightingale Road, Y1 through the office gate on Nightingale Road and Year 6 through the double gate on Nightingale Road. They will be greeted at the gate by a member of staff and guided to their various classes, it is no longer permitted for parents to come into the playground, pupils **must** be dropped off at the gate.

To support social distancing further we have also introduced a staggered end of day, Reception pupils will finish at 2.30, Year 1 at 2.45pm and Year 6 at 3.00pm. Parents will be allowed to enter via the allocated gate in small groups for pick up. Parents will no longer be allowed physically into the school office but instead will need to call and book an appointment to see a member of staff or the Head teacher.

Bubbles

The Reception children will be placed in 'bubbles' of no more than 3-5 pupils with an adult. Pupils in Year 1 and Year 6 will work in bubbles of no more than 13 children and two adults. The pupils will consistently be taught by the same teaching staff in order to reduce contact points. The bubbles will not interact with each other. They will only interact with children within their bubble.

The bubble will maintain social distancing at all times. To support this, we have 2M markings along the corridor and reminders on the walls.

Classrooms and New routines

Classrooms have been redesigned to ensure that children are 2M apart at all times. This we know will be difficult for our Reception children so they will have smaller bubbles with their own set of play based resources to support learning. These resources will be cleaned by teaching staff at the end of each day.

The morning routine will be very structured and the afternoon will be more creative giving children every opportunity to do more outdoor activities- but still only within their bubble. The emphasis will be on promoting well-being and positive mental health. We will spend more time outside as the risk of transmission is reduced when in the open air. The Reception children will continue to use Tapestry so that there is continuity. Staff will also continue to prepare lessons for Tapestry.

Cleaning

Stringent additional handwashing and cleaning will need to take place throughout the day to help manage the risk of infection. We now have an additional day cleaner on site, to add to the team, to help ensure toilets and common areas, including door handles, are cleaned hourly. Children will be routinely taken to wash their hands by a member of the staff team and prompted to wash their hands at key points of the day, for example, on arrival or before and after lunch.

Home Learning

Children in Y2, Y3, Y4 and Y5 are not yet returning to school. We will follow Government guidance on when this is likely to happen and we will carry out risk assessments to ensure it can be done safely. In the meantime, home learning will continue to follow the same structure. Please see the table below outlining this.

CHAT Primary Home Learning Timetable- Summer 2				
Monday	Tuesday	Wednesday	Thursday	Friday
Daily Exercise 30 minutes of physical activity.	Daily Exercise 30 minutes of physical activity.	Daily Exercise 30 minutes of physical activity.	Daily Exercise 30 minutes of physical activity.	Daily Exercise 30 minutes of physical activity.
Daily Reading Log your reading in your reading log or on DB Primary Y3-Y6.	Daily Reading Log your reading in your reading log or on DB Primary Y3-Y6.	Daily Reading Log your reading in your reading log or on DB Primary Y3-Y6.	Daily Reading Log your reading in your reading log or on DB Primary Y3-Y6.	Daily Reading Log your reading in your reading log or on DB Primary Y3-Y6.
Daily RWI Phonics (YR Y1 Y2) Log into https://www.youtube.com/ruthmiskintrainingedu for daily sessions or live at: Set 1: 9:30 and 12:30 Set 2: 10:00 1:00 Set 3 10:30 1:30		Daily RWI Phonics (YR Y1 Y2) Log into https://www.youtube.com/ruthmiskintrainingedu for daily sessions or live at: Set 1: 9:30 and 12:30 Set 2: 10:00 1:00 Set 3 10:30 1:30		
Daily Times Table (Y2 –Y6) Y2 (x2 x5 x10) Y3 (x2,5,10 ,3,4,8) Y4-Y6 (all up to 12x12) https://www.topmarks.co.uk/maths-games/hit-the-button		Daily Times Table (Y2 –Y6) Y2 (x2 x5 x10) Y3 (x2,5,10 ,3,4,8) Y4-Y6 (all up to 12x12) https://www.topmarks.co.uk/maths-games/hit-the-button		
Learning Journey/Topic This is project work to be completed throughout the week.	Writing Task The class teacher will set a writing task on DB Primary.	Maths The class teacher will post some arithmetic work on DB Primary.	Reading Comprehension or EYFS&Y1 Story/Questions Text and questions.	Creative Friday Challenge Take part in the challenge and upload a picture/video.
Sara Tilley Maths Challenge Miss Tilley sets weekly maths work.	The CHAT Story Teachers will upload a video.		Parent Support Answers to Wednesday's Maths.	Parent Support Answers to Thursday's Reading.

Children in YR, Y1 and Y6 who are not returning to school, will be provided with home learning. If your usual teacher is teaching in school then your home learning will look different. The class teacher will upload, onto DB primary, the lessons taught in class for you complete. This will take the format of a PowerPoint presentation. Your teacher will be available to look at your work and answer your questions from 2pm to 2:45pm.

Reception children who are continuing home learning will have work uploaded to both DB Primary and Tapestry each week. They will also be expected to continue using RWinc and review the daily sounds at home.

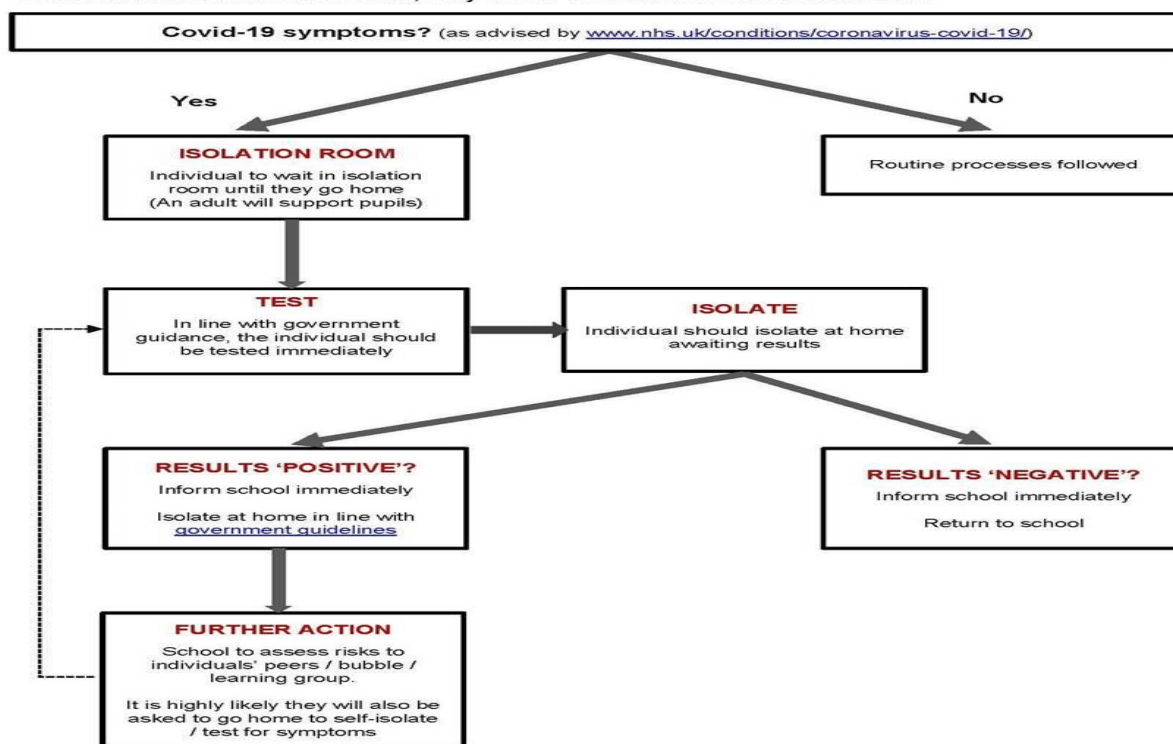
Co-vid Symptoms

Any children and staff who present with COVID-19 symptoms will be isolated prior to being sent home. They will then be required to take a test and can only come back to school once we have seen a negative test result. If the test is positive they will need to stay at home and self-isolate for 14 days and pupils within their bubble will also have to self-isolate as a precautionary measure for 14 days. After the 14 days the child or adult will be retested and can only return to school once the test is negative. By agreeing to send your child back to school you are agreeing to have them tested should they develop any Covid-19 symptoms.

Children will not be allowed back in school until parents/carers provide us with the negative result.

Covid-19 / Coronavirus flowchart

If someone becomes ill in school, they will be assessed in the medical room.



NHS advice for arranging a test: -

www.nhs.uk/conditions/coronavirus-covid-19/testing-for-coronavirus/ask-for-a-test-to-check-if-you-have-coronavirus/

Local test centre: -

Lee Valley Athletics Centre, 61 Meridian Way, Edmonton, London N9 0AR

Lunch

if your child normally has a hot school dinner, this will now be replaced with a packed lunch each day. Children will be given a choice of sandwiches each morning during registration. If your child brings their own lunch to school, then this will be placed under their individual desk area.

School Inset- June 1st

School will be closed on the above date-apart from the Hub which will be now at Woodpecker from Monday. The inset will ensure that we are able to train all of our staff on the 'new normal' ways of working and teaching. This is to safeguard everyone's safety and an ensure ordered, calm and purposeful re-opening of the school.

I recognise the difficult decision placed on all of our families. I hope that you understand that the information provided in this letter is not aimed at causing any additional fear or anxiety but to let you know what we have done to make the school as safe as possible. No risk can be entirely removed and so it is for parents to come to their own decisions based upon the information that we have provided.

We already have the list of Year 1 children who will be returning to school next week and have planned and prepared their teaching space, class teacher and teaching assistant. If you change your mind and want your child to start back, you must call the school office and

let us know. Your child will then start a week later. This allows the school to plan for the safe return of additional children as new 'bubbles' will need to be opened up.

I would like to thank all parents for their cooperation and support of the school during this challenging time. Whilst, we know that home schooling in itself presents challenges we are impressed with how this has been handled by our families. I have loved seeing all the work

Take care and stay safe.

Ms Sharon Parson
(Head teacher)

